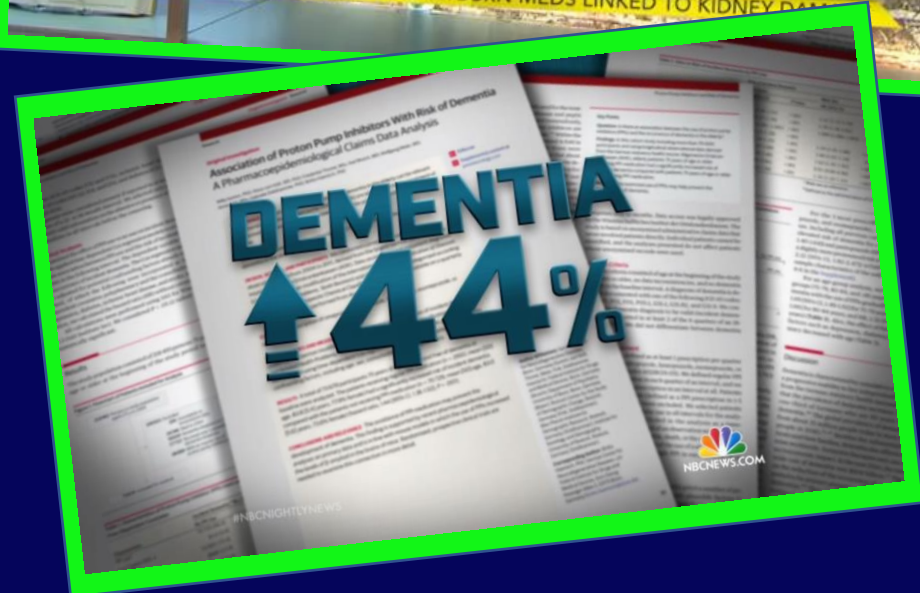
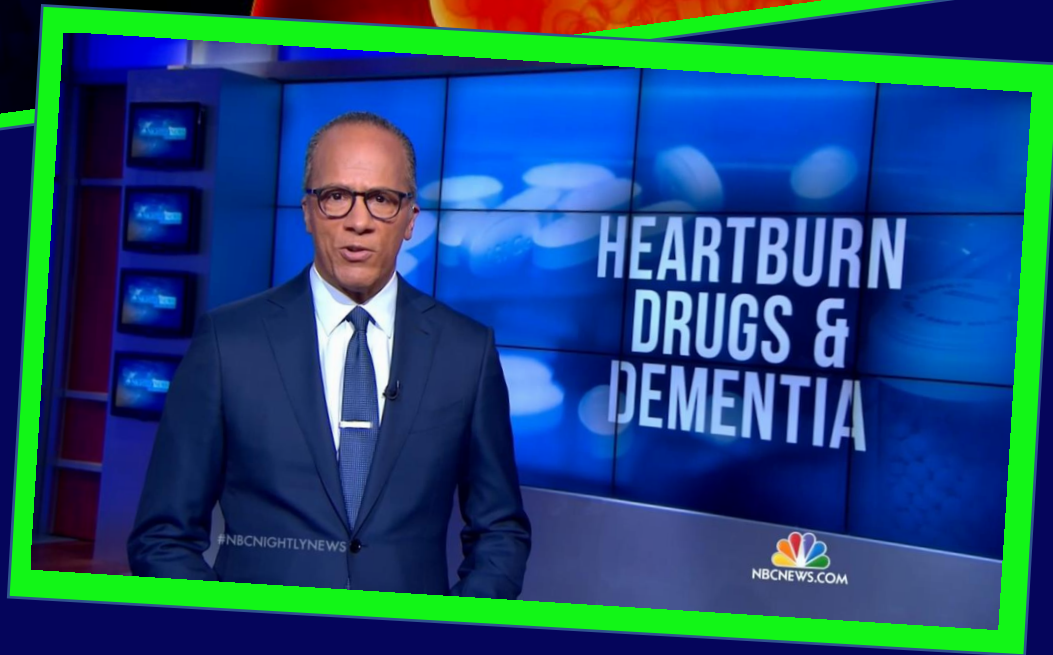
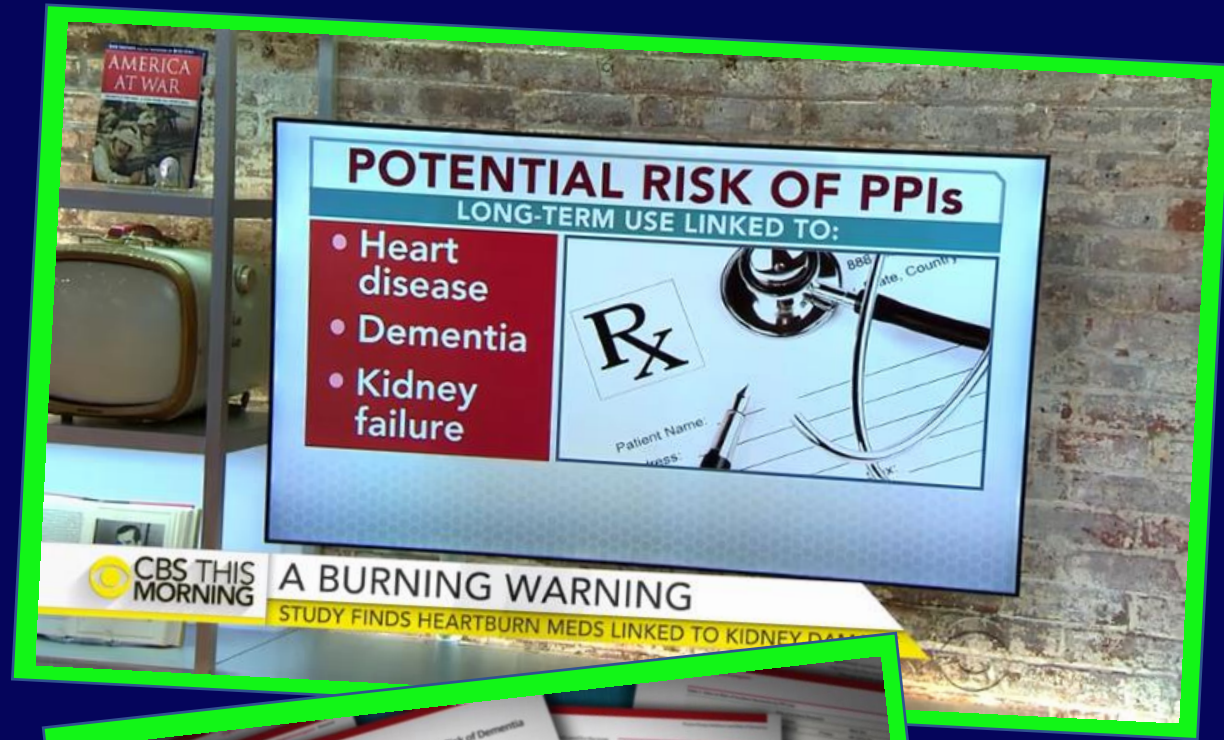
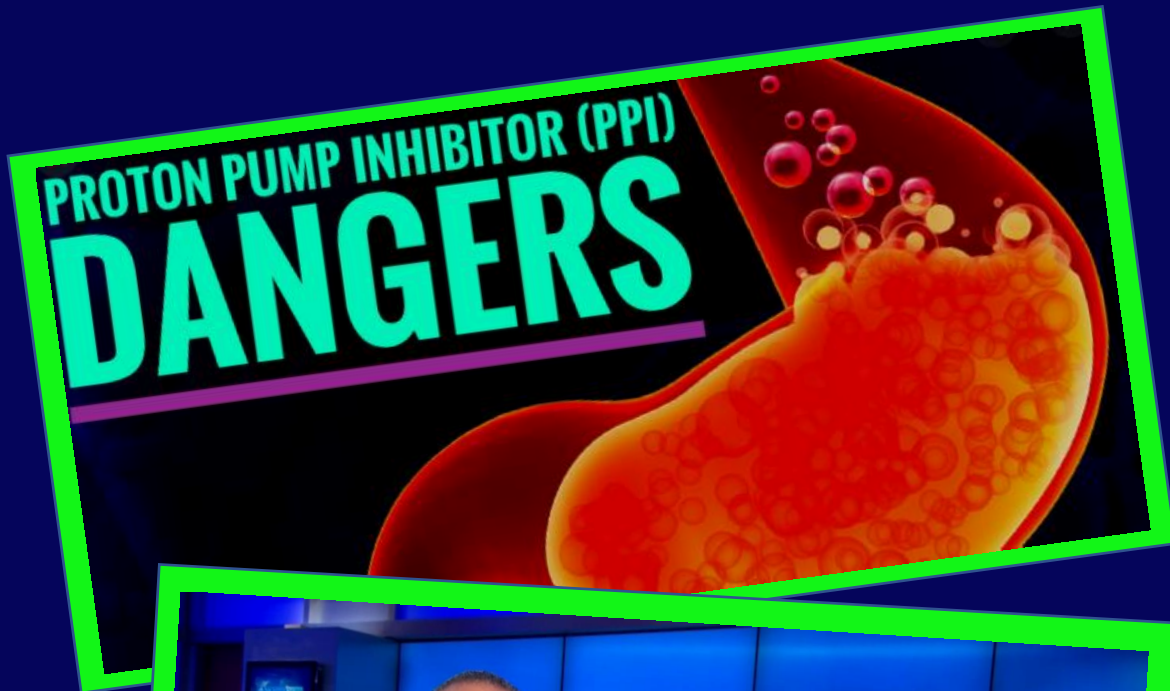


PPI – safety



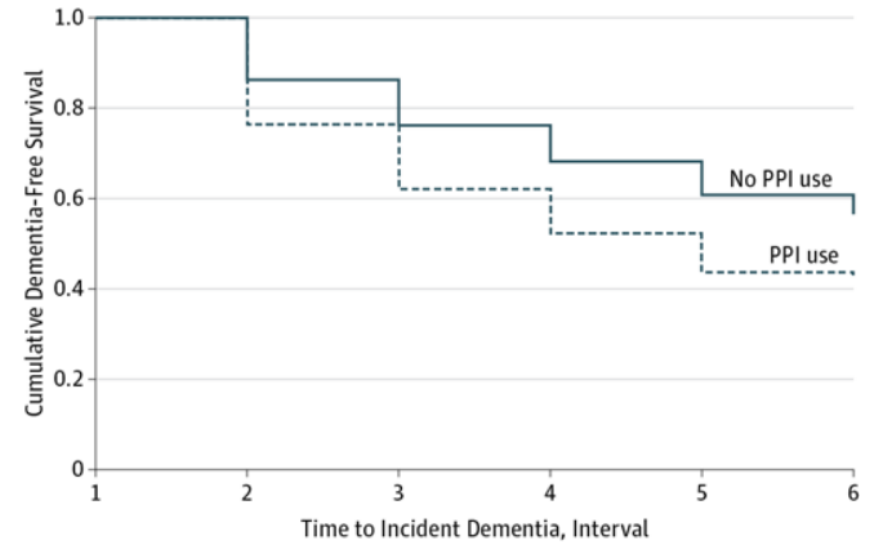
PPI – safety

- **Dementia**
- **Antiplatelet agents**
- *C. diff*
- **Pneumonia**
- **Kidney disease**
 - **AIN**
 - **CKD**
- **Bone mineral density**

PPI – safety

- Dementia
- Antiplatelet agents
- *C. diff*
- Pneumonia
- Kidney disease
 - AIN
 - CKD
- Bone mineral density

Figure 2.



Dementia-Free Survival by Use of Proton Pump Inhibitors (PPIs)

PPI – safety

- Dementia
- Antiplatelet agents
- *C. diff*
- Pneumonia
- Kidney disease
 - AIN
 - CKD
- Bone mineral density

Association Between Proton Pump Inhibitor Use and Cognitive Function in Women

Paul Lochhead,^{1,2} Kaitlin Hagan,^{3,4} Amit D. Joshi,^{1,2} Hamed Khalili,^{1,2} Long H. Nguyen,^{1,2} Francine Grodstein,^{3,4} and Andrew T. Chan^{1,2,4}

Gastroenterology



Dementia, cognitive impairment and proton pump inhibitor therapy: A systematic review

Riley Batchelor, Julia Fiona-Maree Gilmartin, William Kemp, Ingrid Hopper, Danny Liew



Proton Pump Inhibitors and Risk of Mild Cognitive Impairment and Dementia

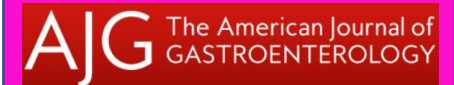
Felicia C. Goldstein, PhD,* Kyle Steenland, PhD,[†] Liping Zhang, PhD,[‡] Allan I. Levey, MD, PhD,* and Ihab Hajjar, MD, MS*^{§§}

Journal of the American Geriatrics Society



No Association Linking Short-Term Proton Pump Inhibitor Use to Dementia

Systematic Review and Meta-analysis of Observational Studies



PPI – safety

- **Dementia**
- **Antiplatelet agents**
- *C. diff*
- **Pneumonia**
- **Kidney disease**
 - **AIN**
 - **CKD**
- **Bone mineral density**

PPI – safety

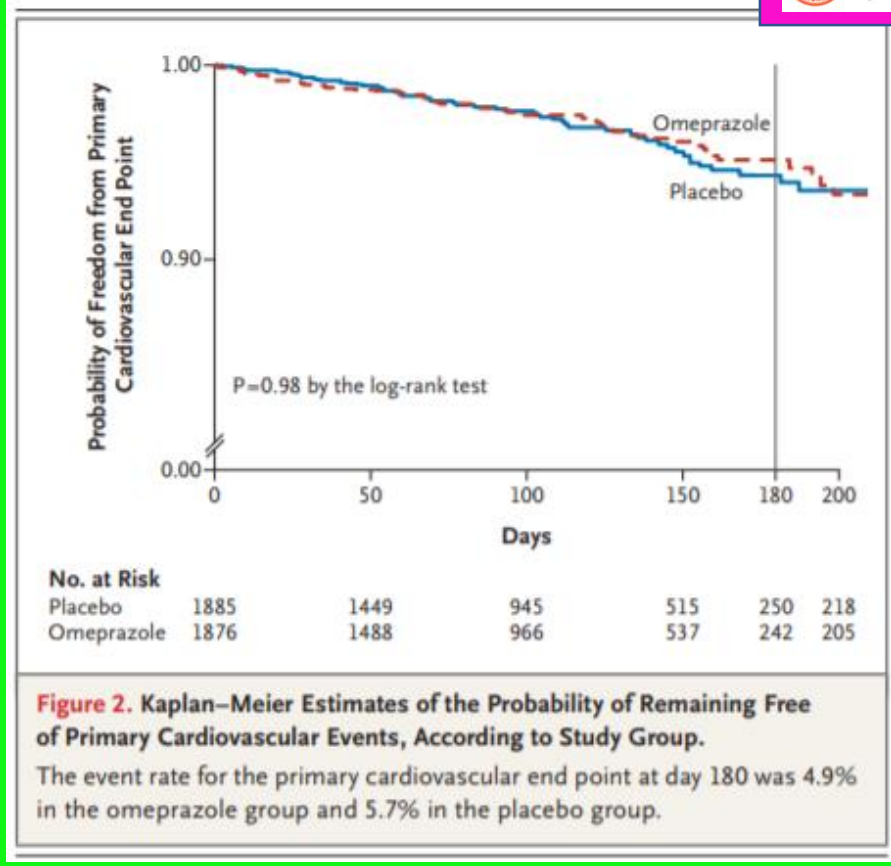
- Dementia
- Antiplatelet agents
- *C. diff*
- Pneumonia
- Kidney disease
 - AIN
 - CKD
- Bone mineral density

ORIGINAL ARTICLE

Clopidogrel with or without Omeprazole in Coronary Artery Disease



The NEW ENGLAND
JOURNAL of MEDICINE



PPI – safety

- **Dementia**
- **Antiplatelet agents**
- *C. diff*
- **Pneumonia**
- **Kidney disease**
 - **AIN**
 - **CKD**
- **Bone mineral density**

PPI – safety

- Dementia
- Antiplatelet agents
- *C. diff*
- Pneumonia
- Kidney disease
 - AIN
 - CKD
- Bone mineral density

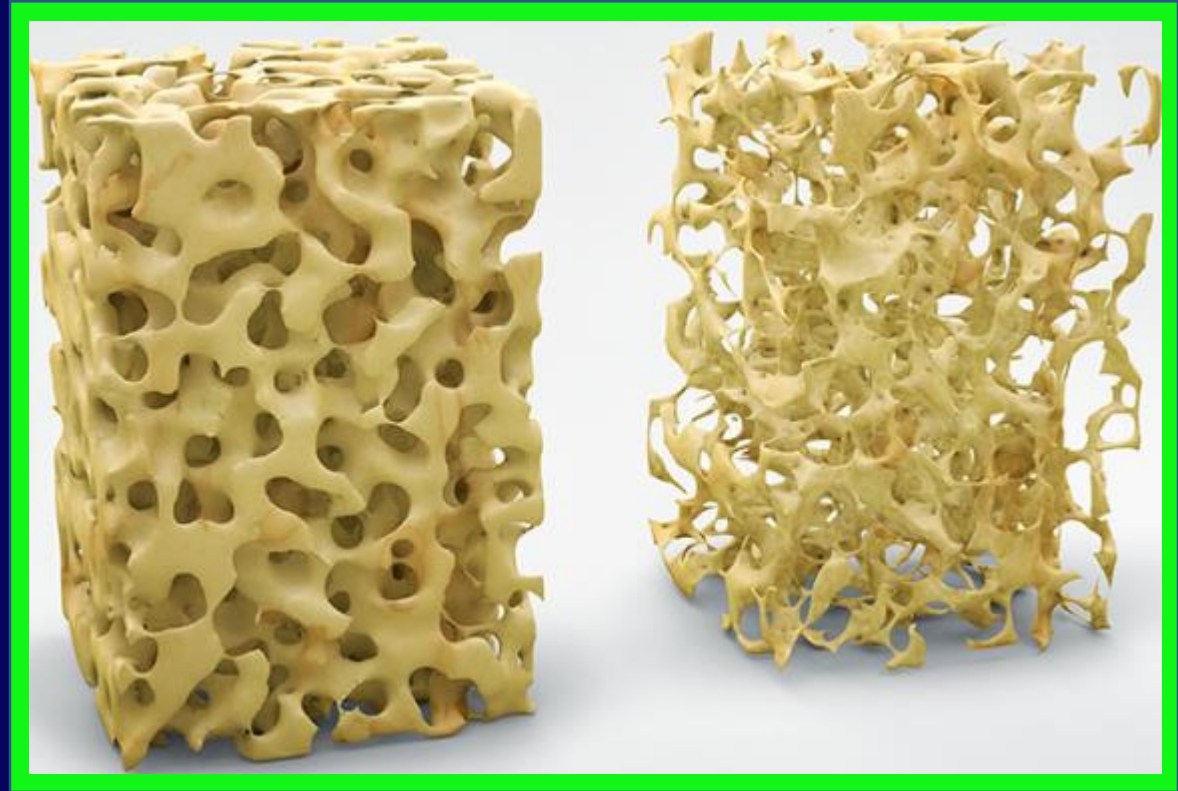


PPI – safety

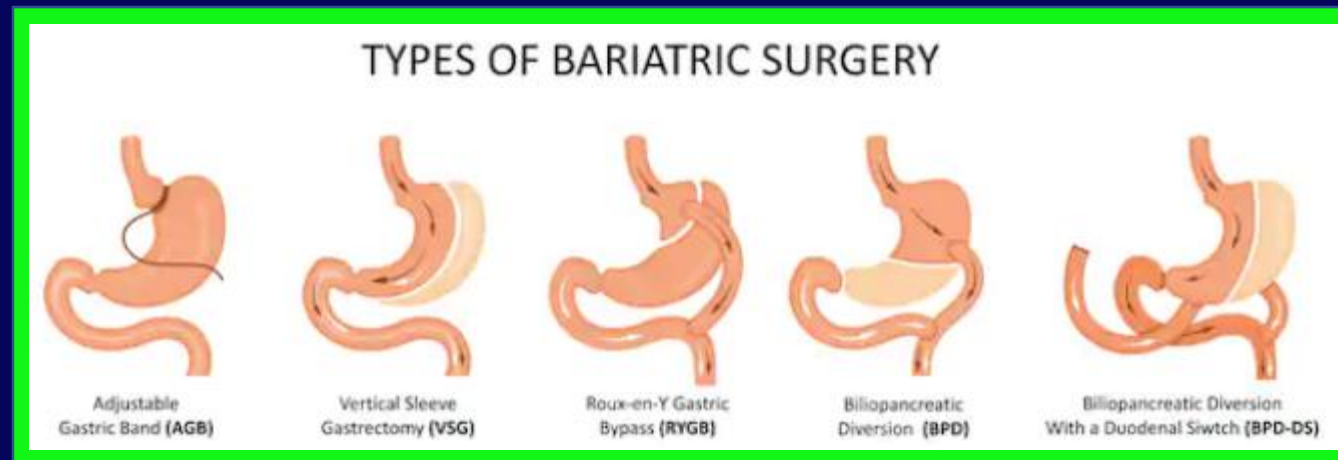
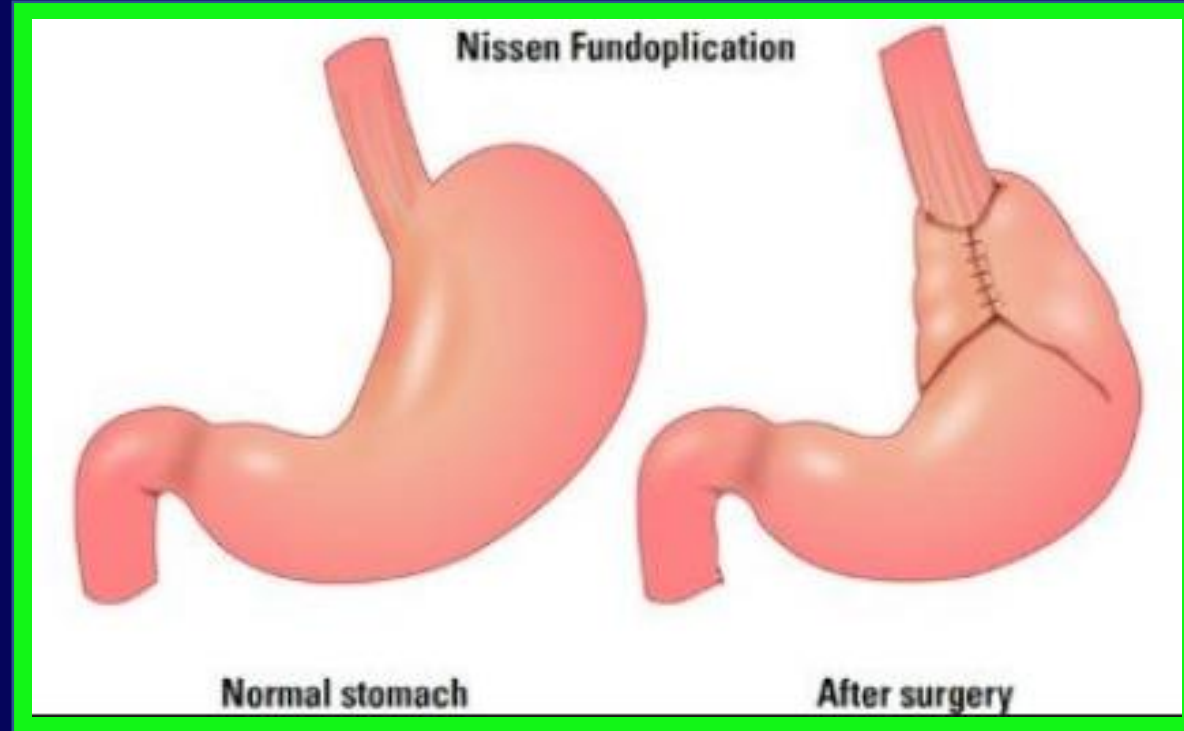
- **Dementia**
- **Antiplatelet agents**
- *C. diff*
- **Pneumonia**
- **Kidney disease**
 - **AIN**
 - **CKD**
- **Bone mineral density**

PPI – safety

- Dementia
- Antiplatelet agents
- *C. diff*
- Pneumonia
- Kidney disease
 - AIN
 - CKD
- Bone mineral density

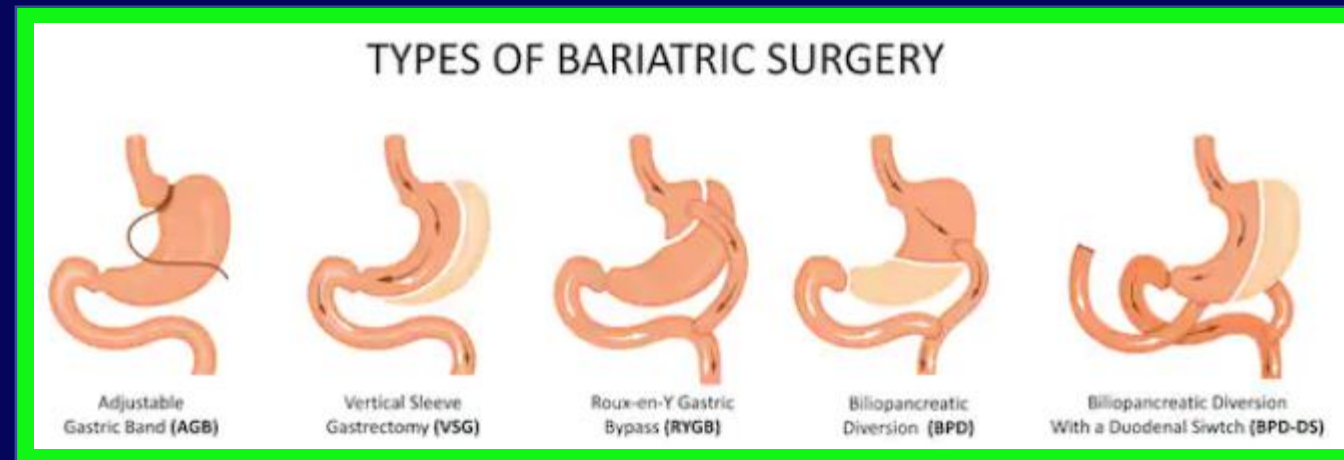
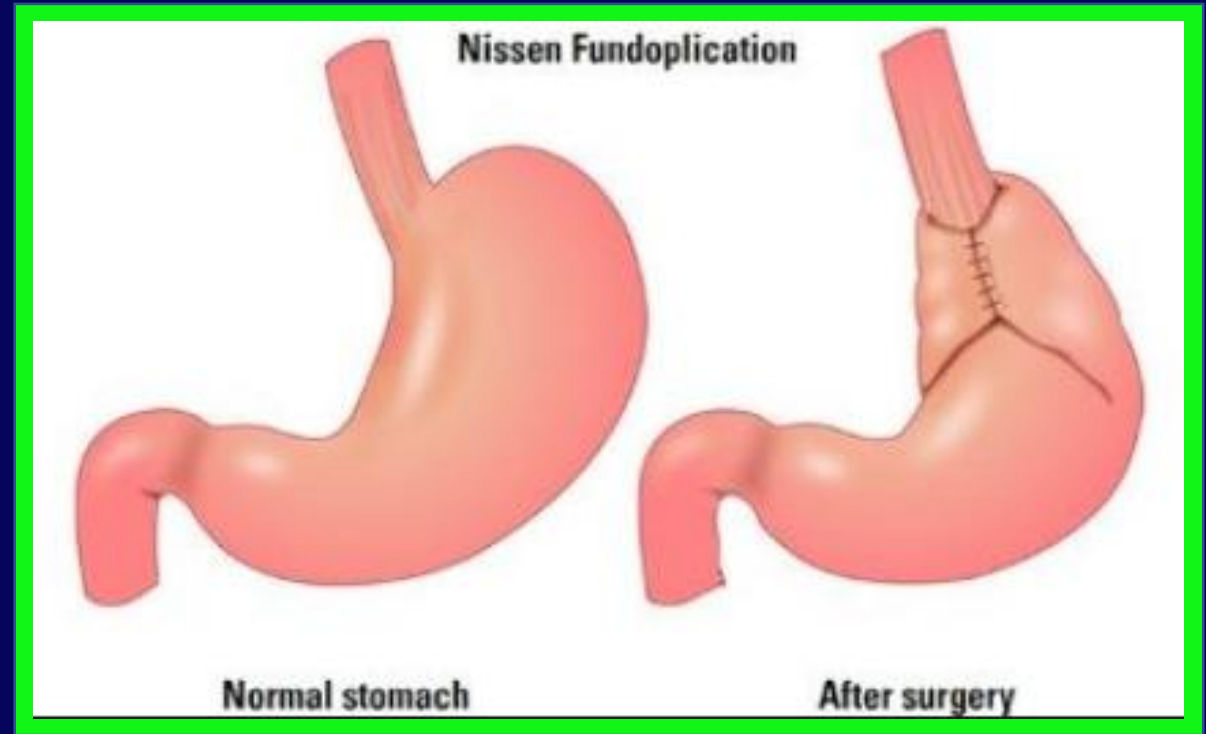


Management – surgical options

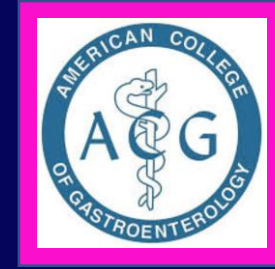


Management – surgical options

- Desire to stop medication
- Side effect with medication
- Large hiatal hernia
- Refractory esophagitis
- Persistent symptoms



A word on Barrett's



- Squamous to columnar metaplasia

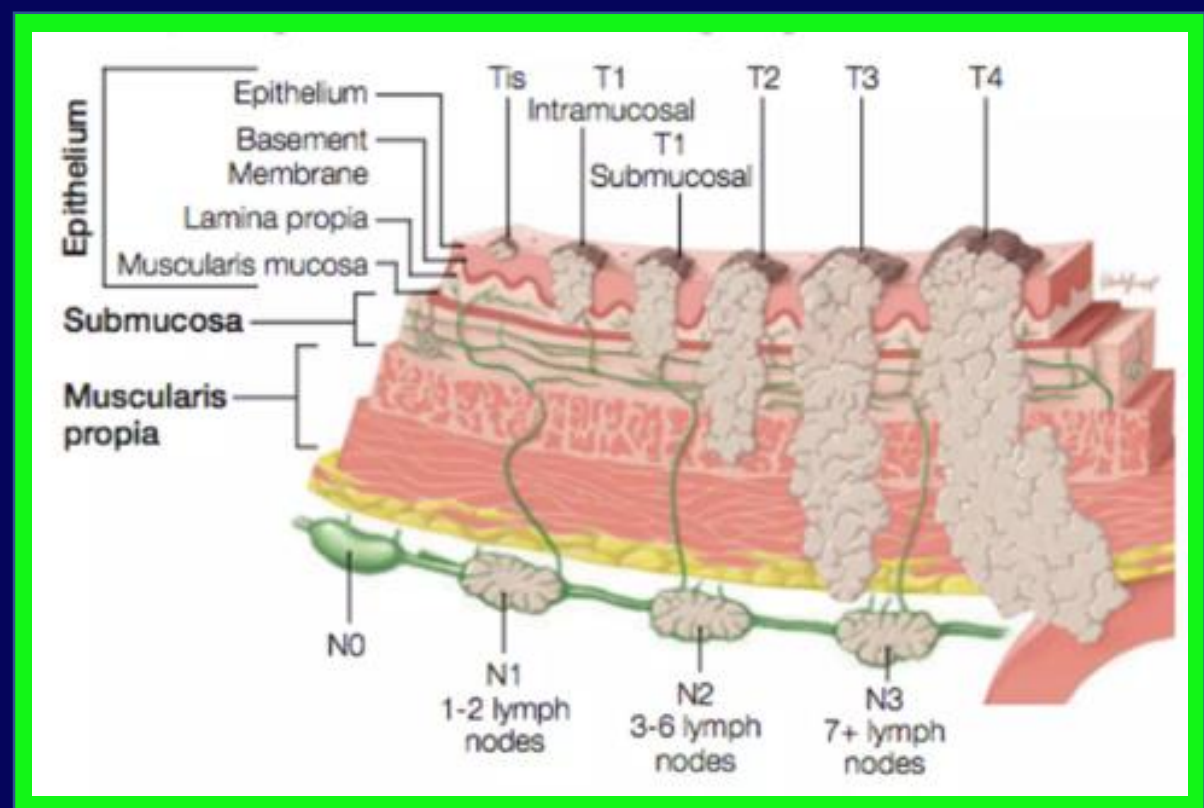
Non-dysplastic

LGD

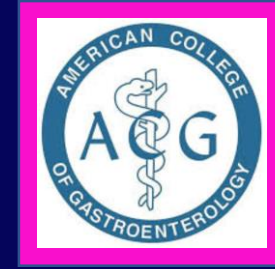
HGD

adenocarcinoma

- Who to screen?



A word on Barrett's



- Squamous to columnar metaplasia

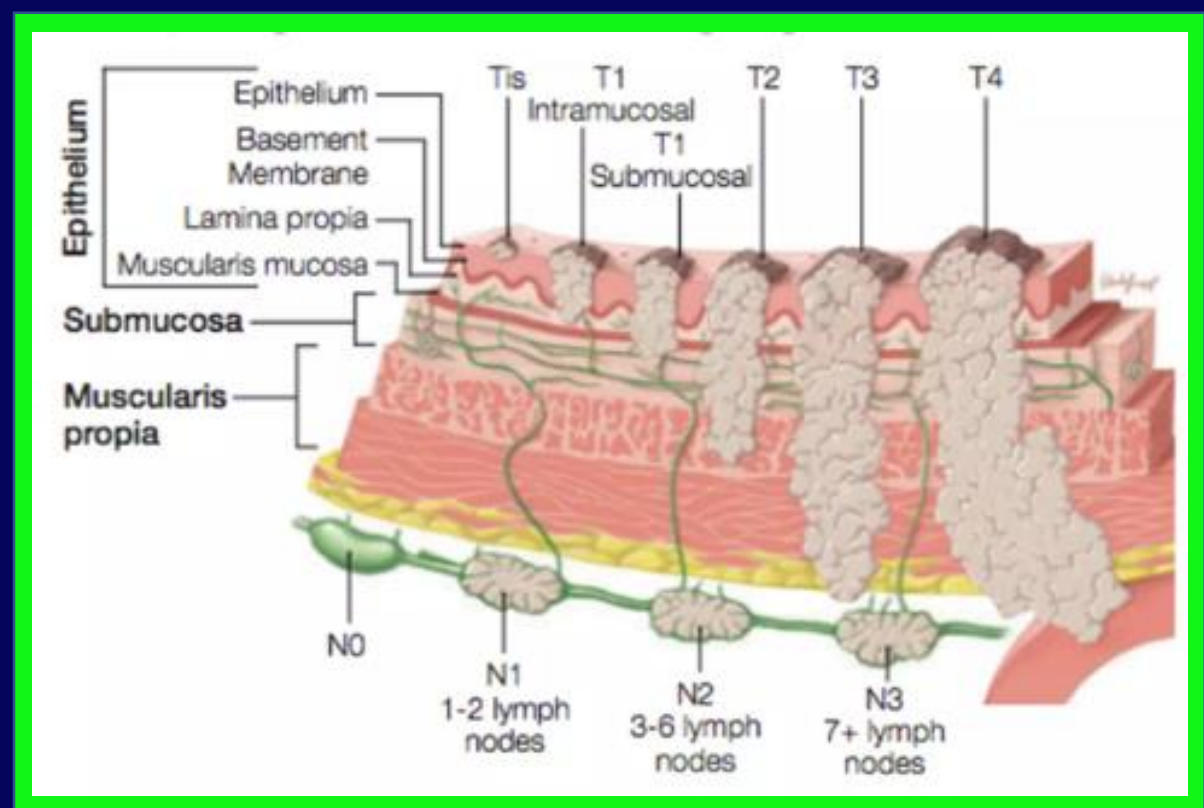
Non-dysplastic

LGD

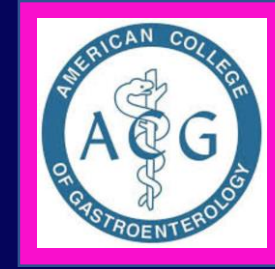
HGD

adenocarcinoma

- Who to screen?
 - Men



A word on Barrett's



- Squamous to columnar metaplasia

Non-dysplastic

LGD

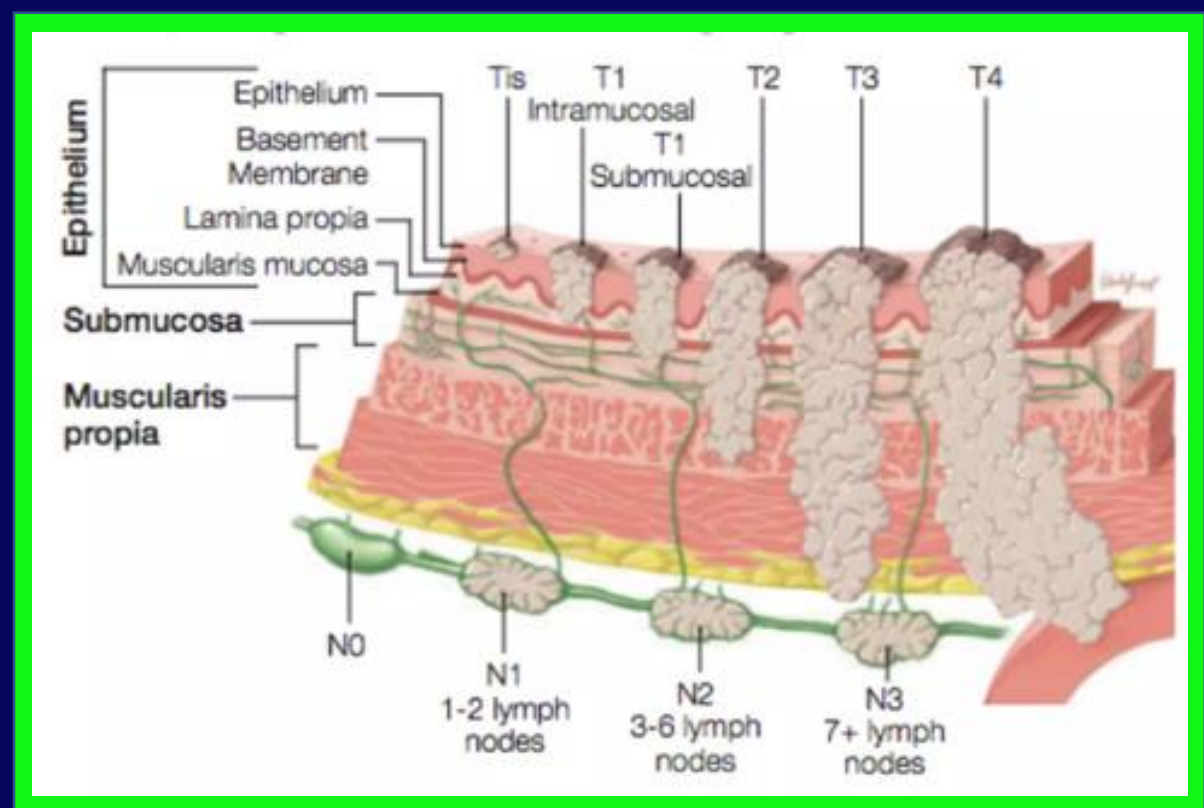
HGD

adenocarcinoma

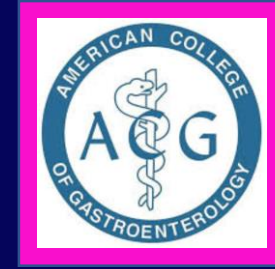
- Who to screen?

- Men

- Long standing GERD



A word on Barrett's



- Squamous to columnar metaplasia

Non-dysplastic

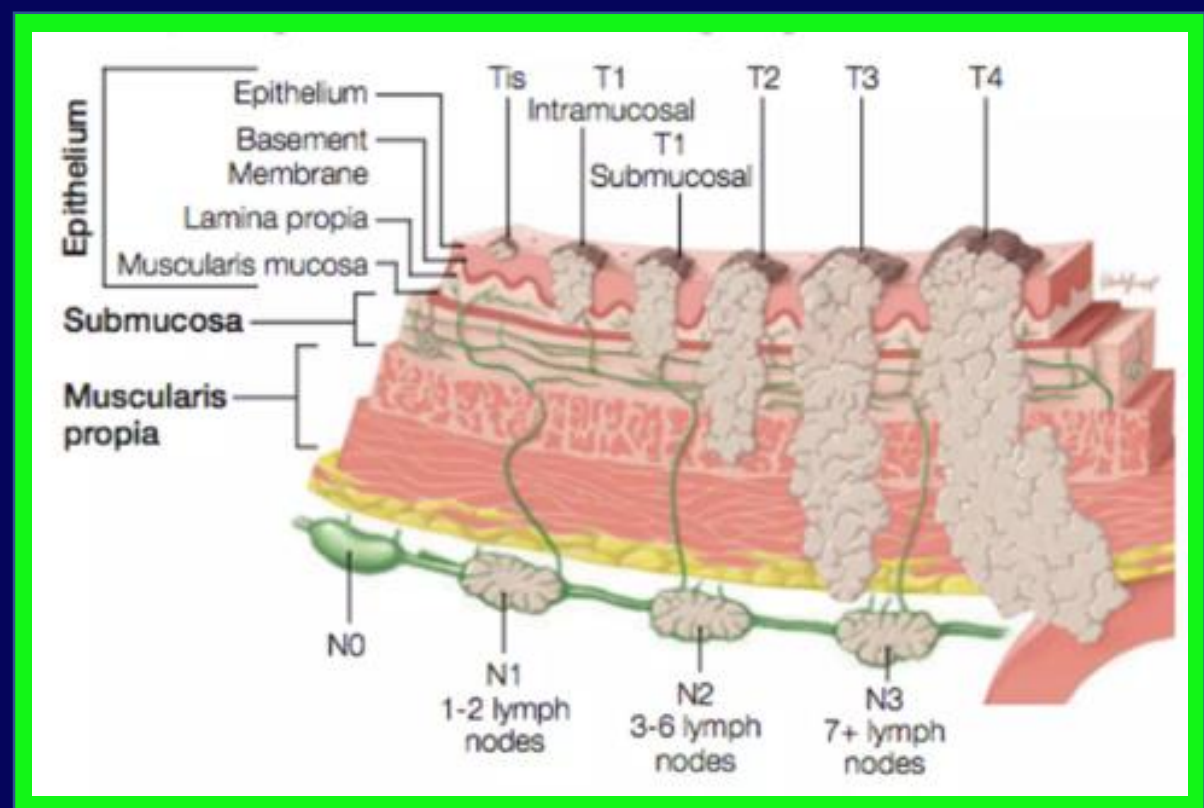
LGD

HGD

adenocarcinoma

- Who to screen?

- Men
- Long standing GERD
- Risk factors



A word on Barrett's



- Squamous to columnar metaplasia

Non-dysplastic

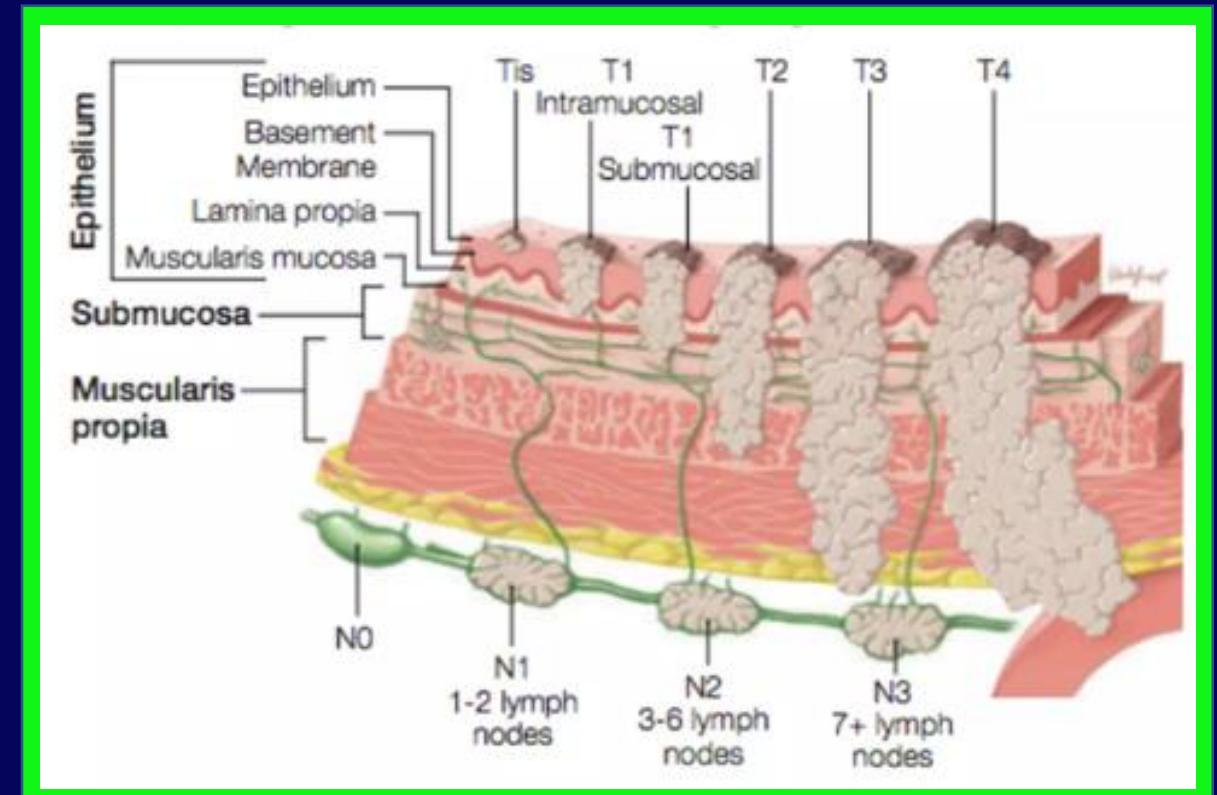
LGD

HGD

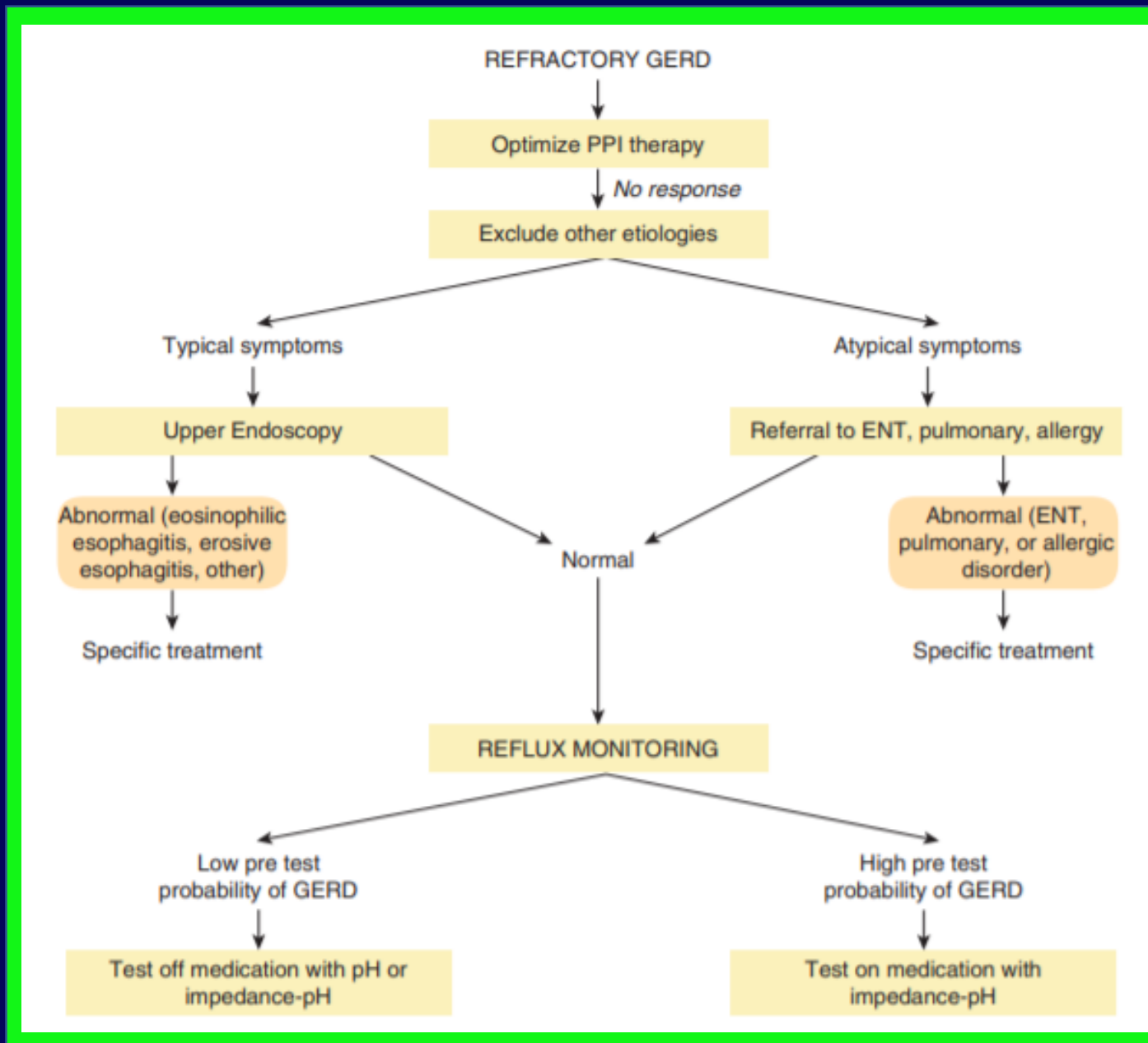
adenocarcinoma

- Who to screen?

- Men
- Long standing GERD
- Risk factors
 - Age >50
 - Obesity
 - Smoking
 - FMH



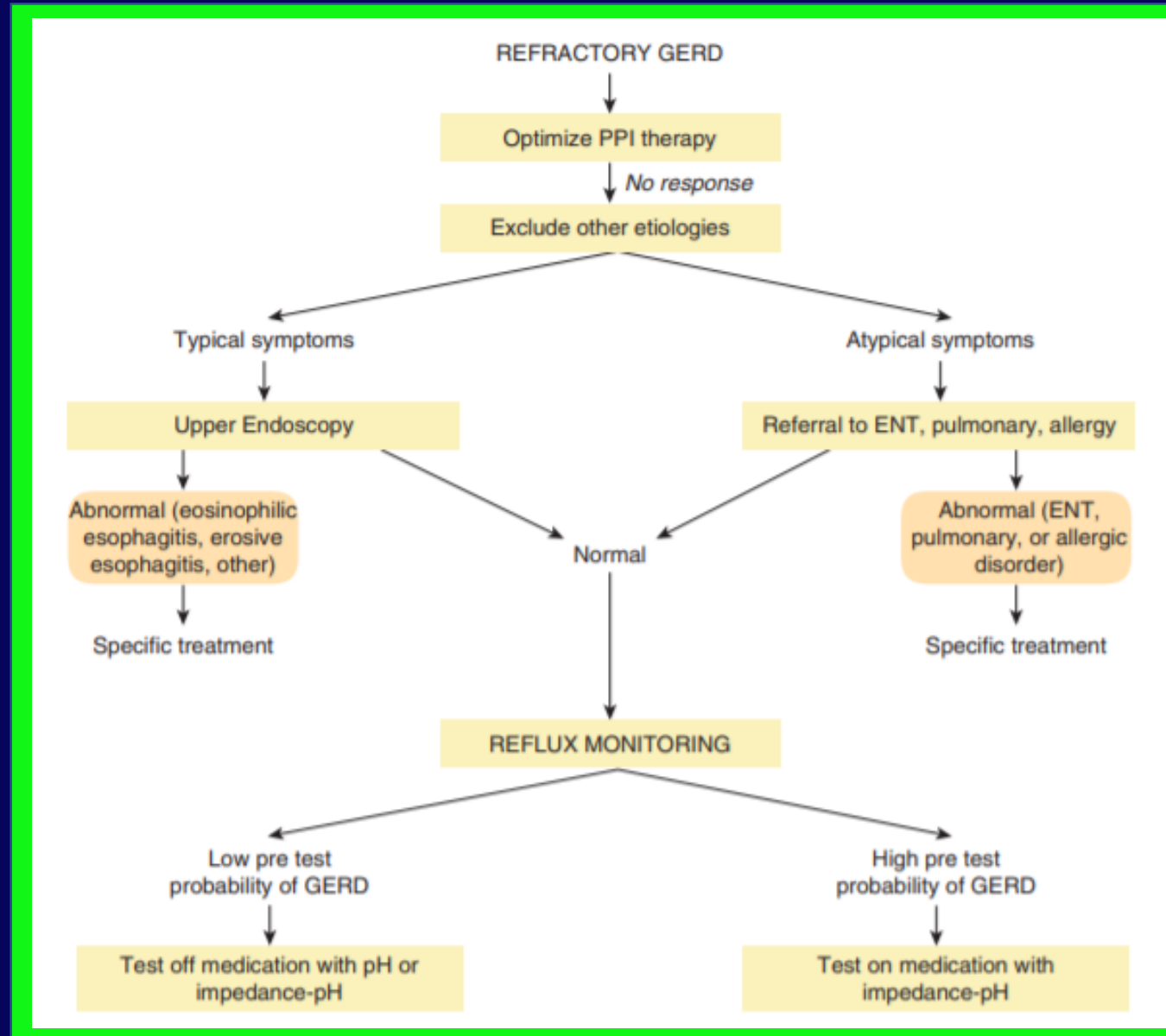
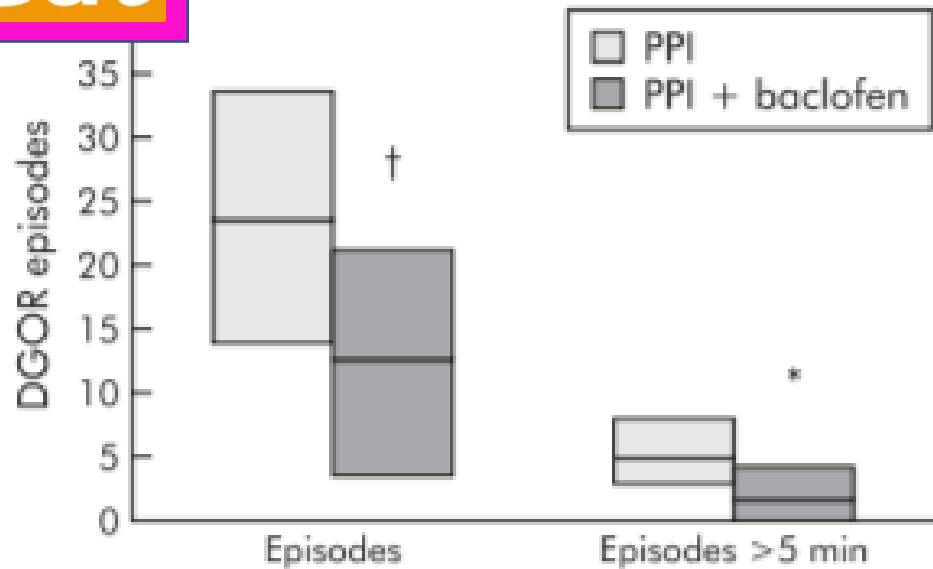
Refractory GERD



Refractory GERD

- Baclofen
 - GABA agonist
 - Decrease TLESRs

Gut



In summary...

- Diagnose based on symptoms
- Treat with 8 week PPI trial
- EGD if alarm symptoms or risk factors
- Always use lowest effective PPI dose



- Eusebi LH, Ratnakumaran R, Yuan Y, *et al* Global prevalence of, and risk factors for, gastro-oesophageal reflux symptoms: a meta-analysis *Gut* 2018;**67**:430-440.
- Locke et al. *Gastroenterology*. 1997;112:1448-1456
- Vakil N, van Zanten SV, Kahrilas P, et al. The Montreal definition and classification of gastroesophageal reflux disease: a global evidence-based consensus. *Am J Gastroenterol* 2006; 101:1900.
- <http://www.thefdotlife.com/a-few-signs-you-may-be-getting-old/i-think-that-we-have-discovered-the-cause-of-your-severe-heartburn/>
- Extraesophageal Symptoms and Diseases Attributed to GERD: Where is the Pendulum Swinging Now? Vaezi, Michael F. et al. *Clinical Gastroenterology and Hepatology*, Volume 16, Issue 7, 1018 – 1029
- <https://www.mayoclinic.org/diseases-conditions/gerd/symptoms-causes/syc-20361940>
- Hampel H, et al. *Ann Intern Med*. 2005;143:199-211
- Katz PO, Gerson LB, Vela MF. Guidelines for the diagnosis and management of gastroesophageal reflux disease. *Am J Gastroenterol*. 2013;108:308–328
- <https://www.medtronic.com/covidien/en-us/products/reflux-testing/bravo-reflux-testing-system.html>
- <https://emedicine.medscape.com/article/175098-overview>
- <https://www.endoscopy-campus.com/en/classifications/reflux-esophagitis-los-angeles-classification/>
- Eliakim R., Sharma V.K. (2014) Esophageal Capsule Endoscopy. In: Keuchel M., Hagenmüller F., Tajiri H. (eds) *Video Capsule Endoscopy*. Springer, Berlin, Heidelberg
- Chiba N , De Gara CJ , Wilkinson JM et al. Speed of healing and symptom relief in grade II to IV gastroesophageal reflux disease: a meta-analysis . *Gastroenterology* 1997 ; 112 : 1798 – 810
- Gomm W et al. Association of proton pump inhibitors with risk of dementia: A pharmacoepidemiological claims data analysis. *JAMA Neurol* 2016 Apr; 73:410.
- Bhatt DL, Cryer BL, Contant CF, et al. Clopidogrel with or without omeprazole in coronary artery disease. *N Engl J Med* 2010;363:1909–1917.
- <https://cme.uhhospitals.org/news/understanding-barrett-s-esophagus>
- Koek GH , Sifrim D , Lerut T et al. Effect of the GABA(B) agonist baclofen in patients with symptoms and duodeno-gastro-oesophageal reflux refractory to proton pump inhibitors . *Gut* 2003 ; 52 : 1397 – 402